

# LISST-SL Field Testing in Western Washington

Chris Curran, Jon Czuba,  
and Raegan Huffman

USGS-Sequoia WebEx Workshop  
January 30, 2012



# Field Testing



Field testing has occurred in western Washington since the LISST-SL was purchased in 2009.



# Swimming issue

(needs more weight)

---



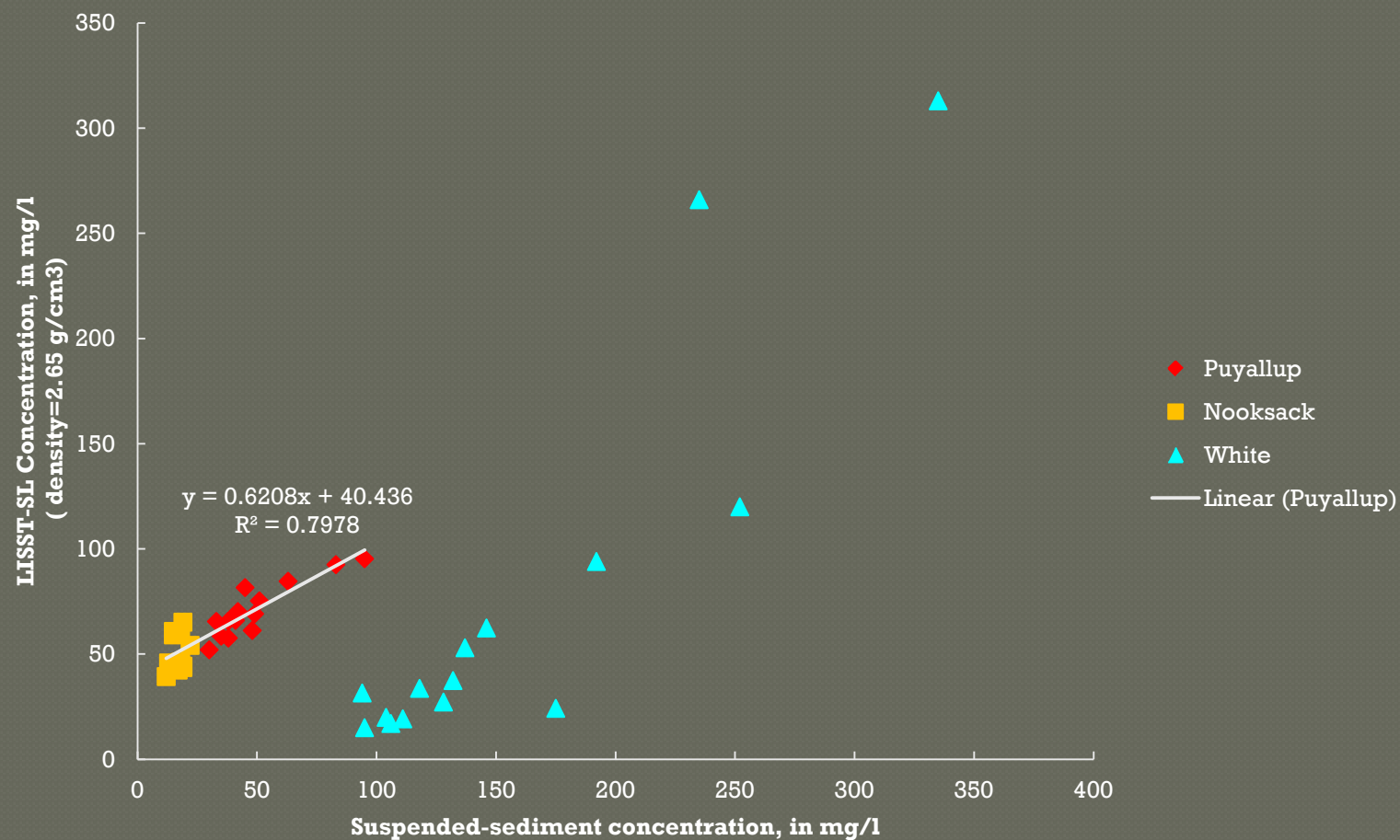


# LISST-SL Testing Plan

---

- Perform testing on three rivers
- Side-by-side comp. w/ FISP samplers
- EDI method for stationing
- ADCP for Q-meas. & velocity verification
- Point samples at 0.2, 0.6, 0.8 (P61)
- Depth-Integrated samples (D74)
- Approximately 15-20 samples per site
- Samples analyzed for SSC and %fines

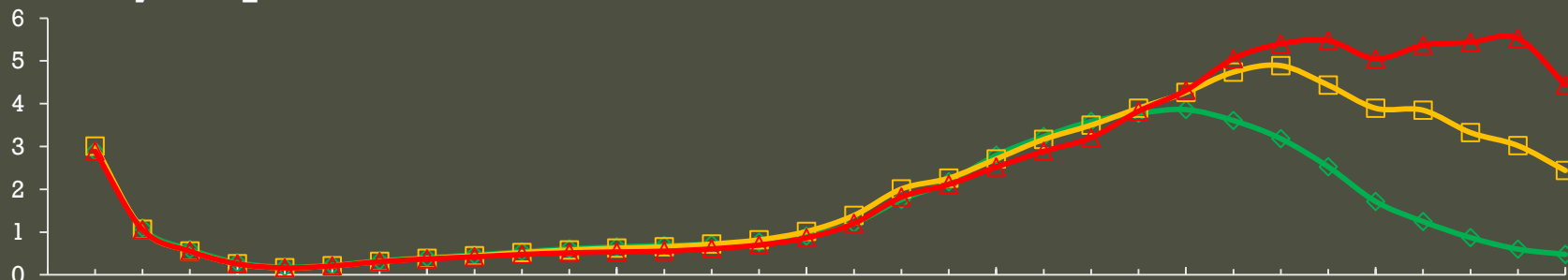
# SSC P61 vs LISST





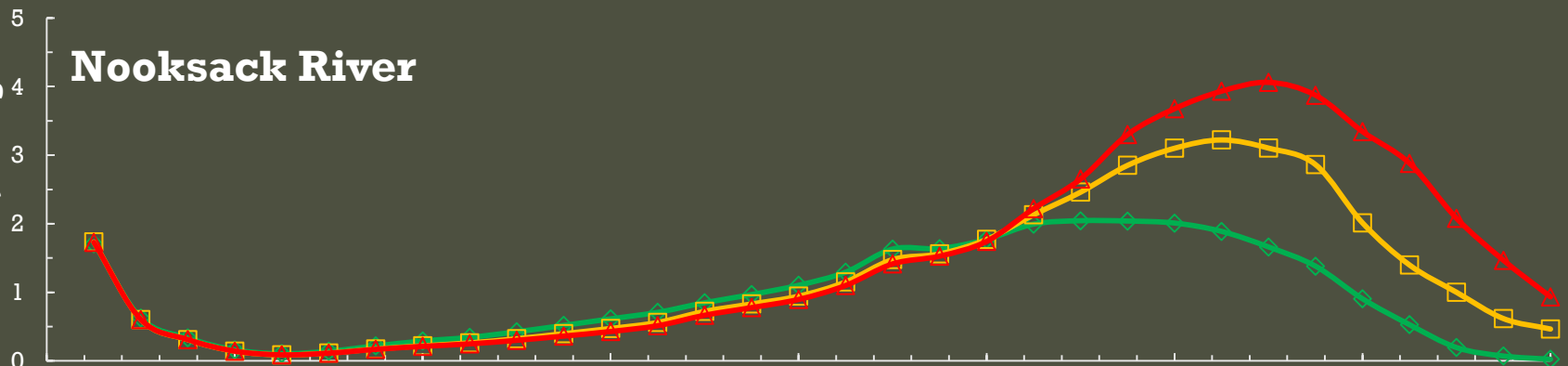
## Puyallup River

0.2 depth 0.6 depth 0.8 depth



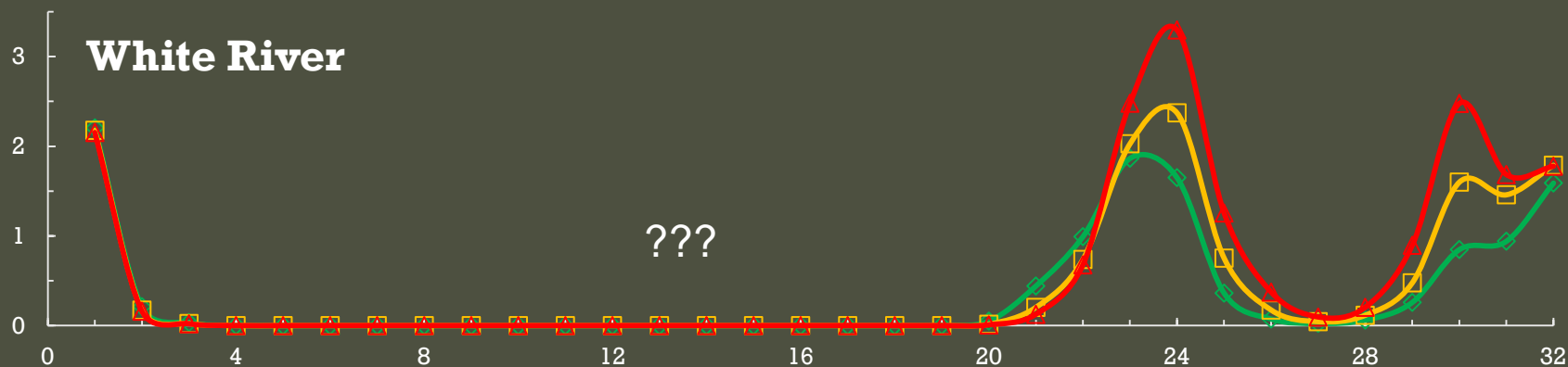
## Nooksack River

Concentration, in mg/l



## White River

???



fine

Particle Size Class

coarse

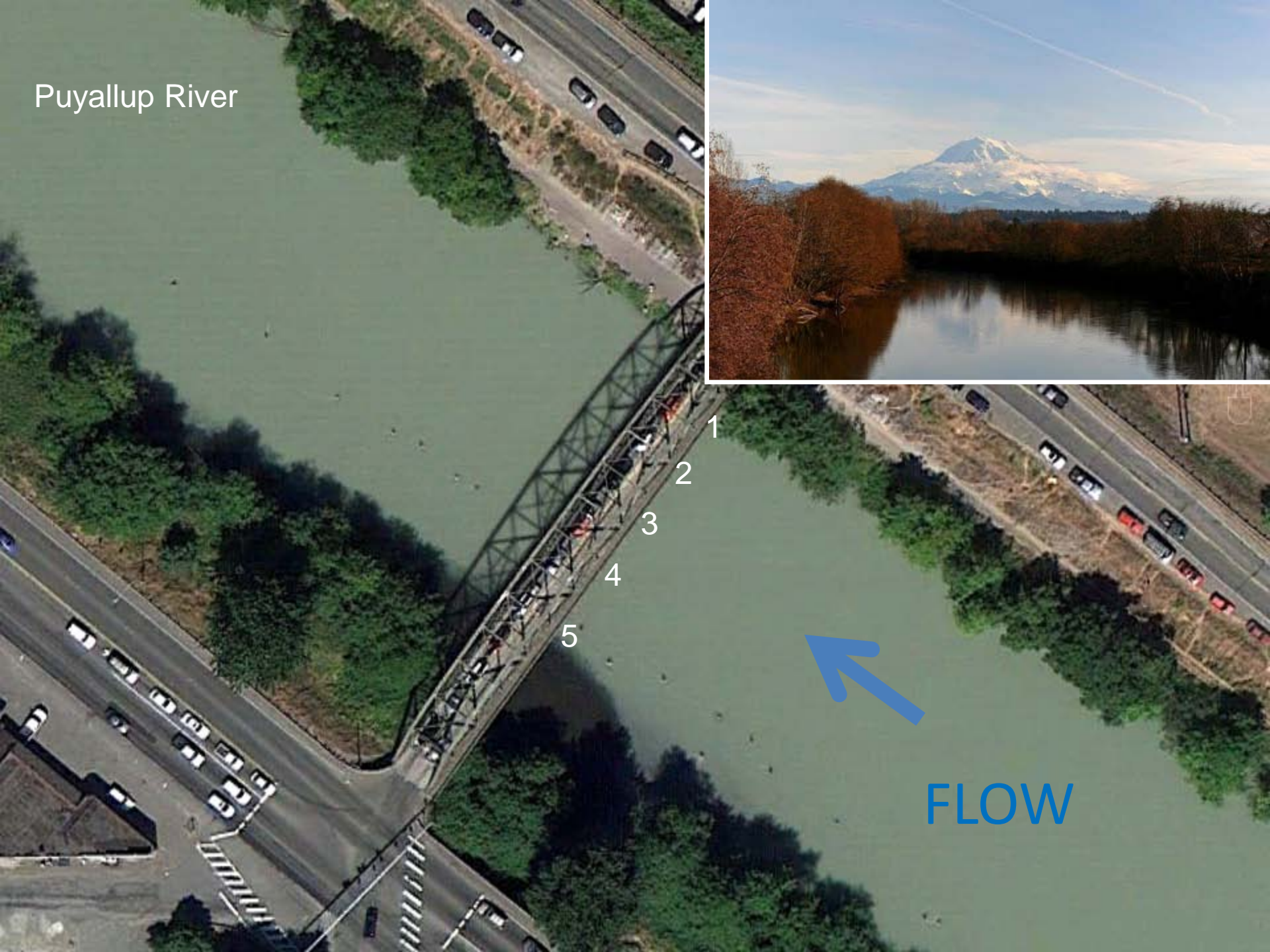
# Lessons so far...

---

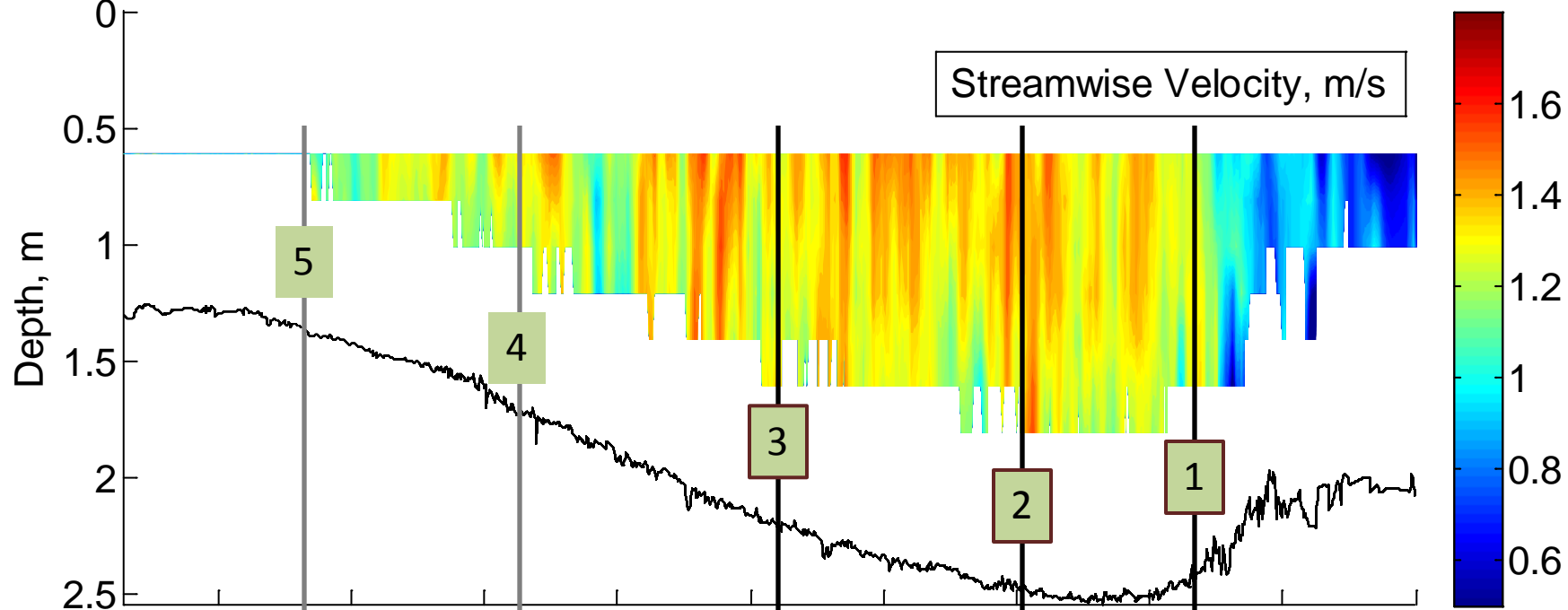
- Temperature sensitive instrument
- DON'T TOUCH BOTTOM of the river bed
- Need more weight on sampler
- Sequoia has been a good partner.
- New tail, new filter, new bleed port, etc..
- Sensitive instrument – “temperamental”
- Requires sig. prep/post time in lab
- Some inconsistencies exist in units



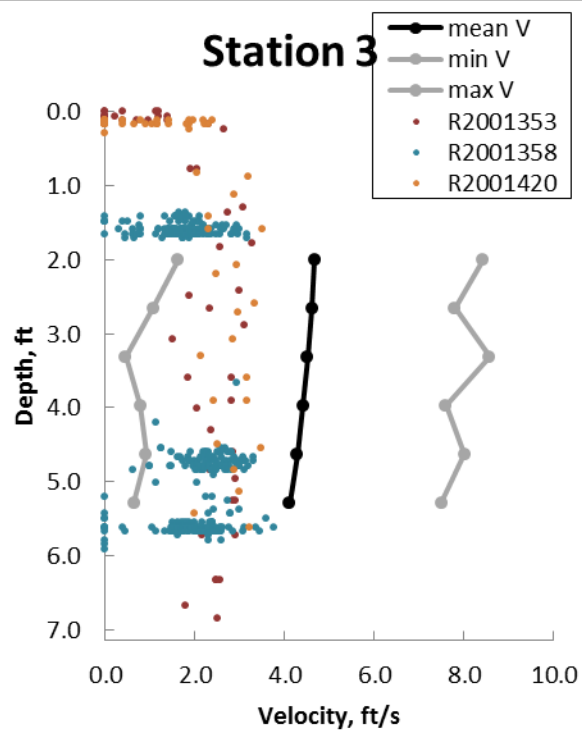
Puyallup River



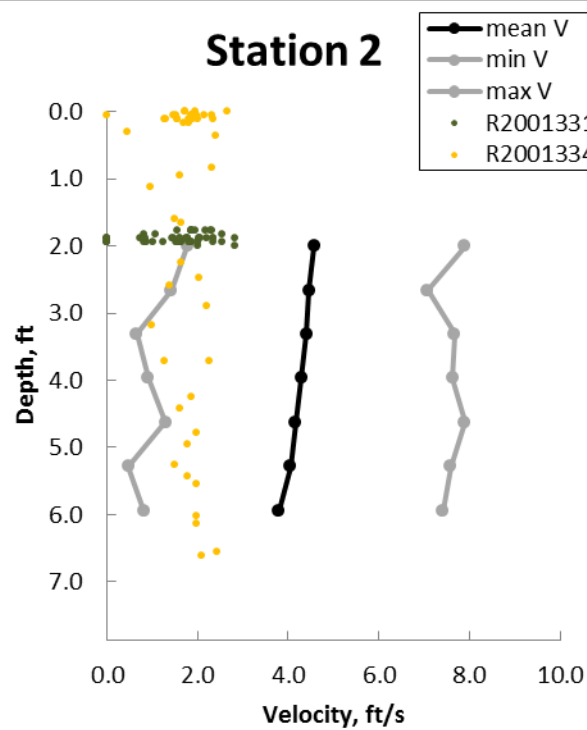
FLOW



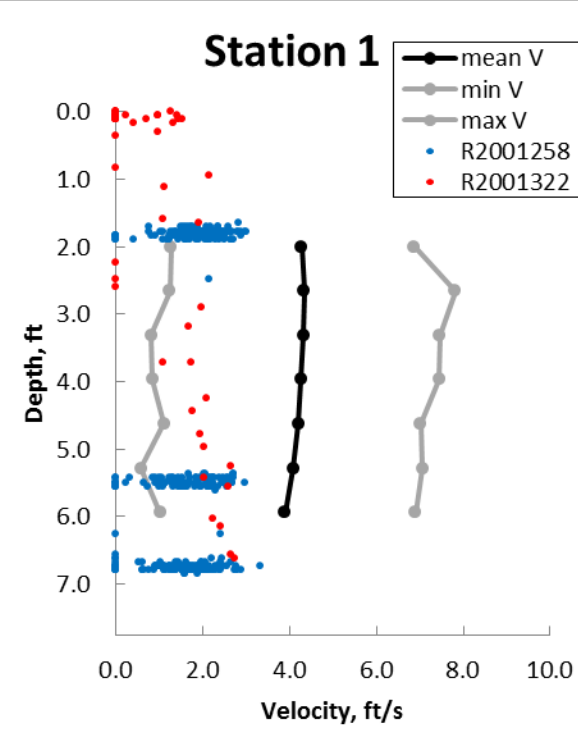
Station 3



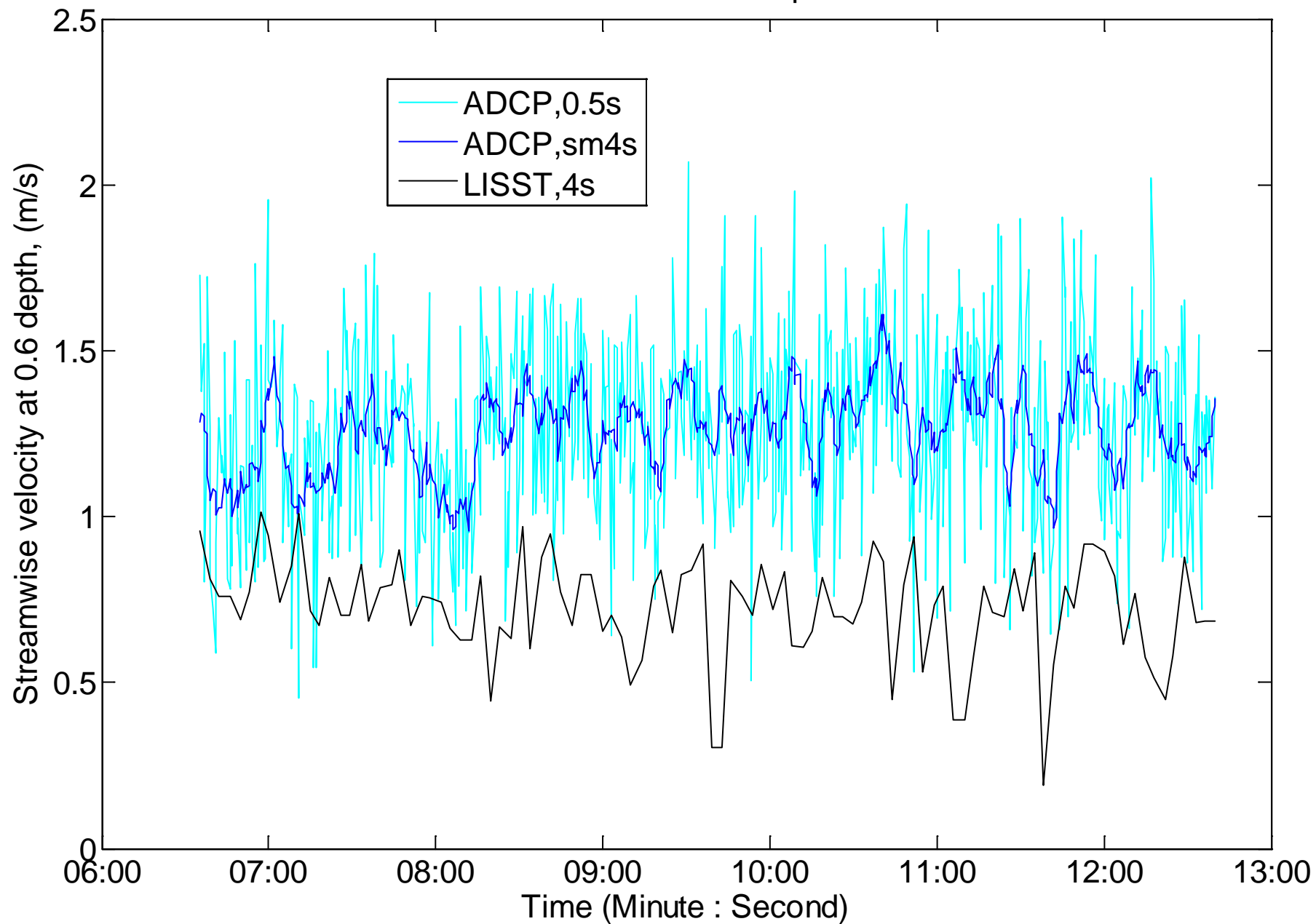
Station 2



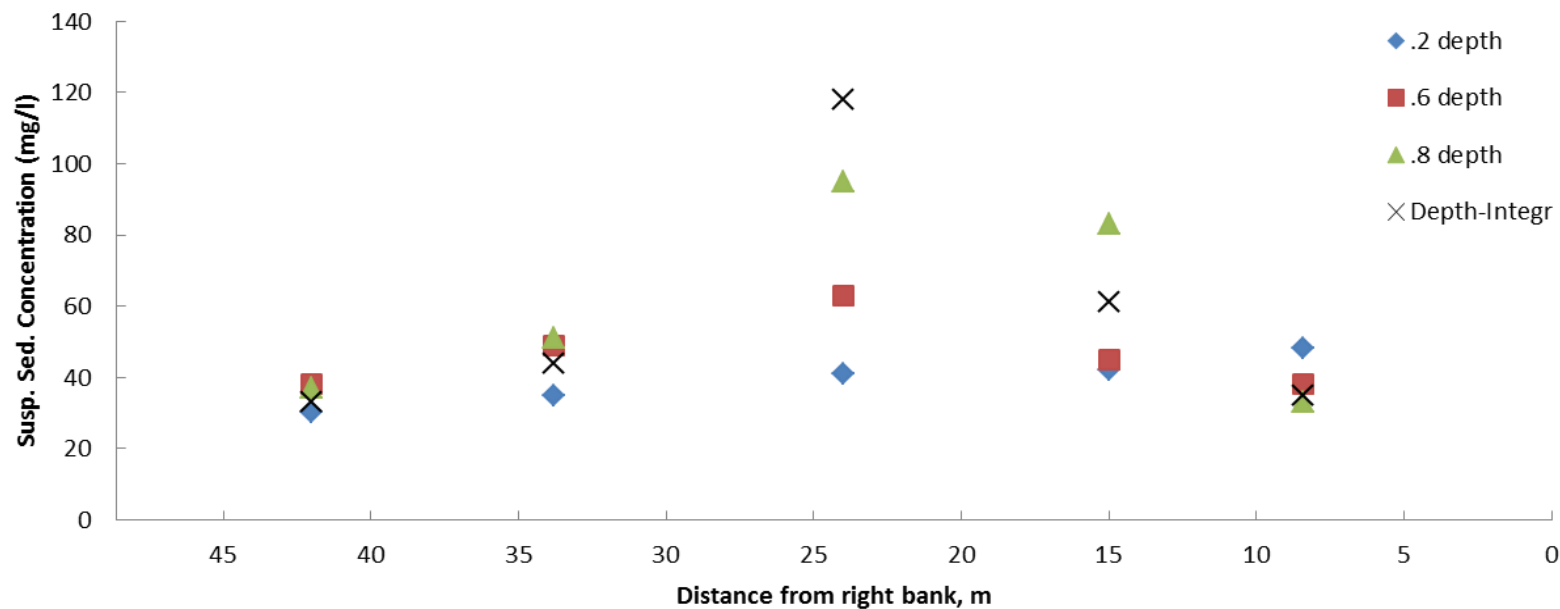
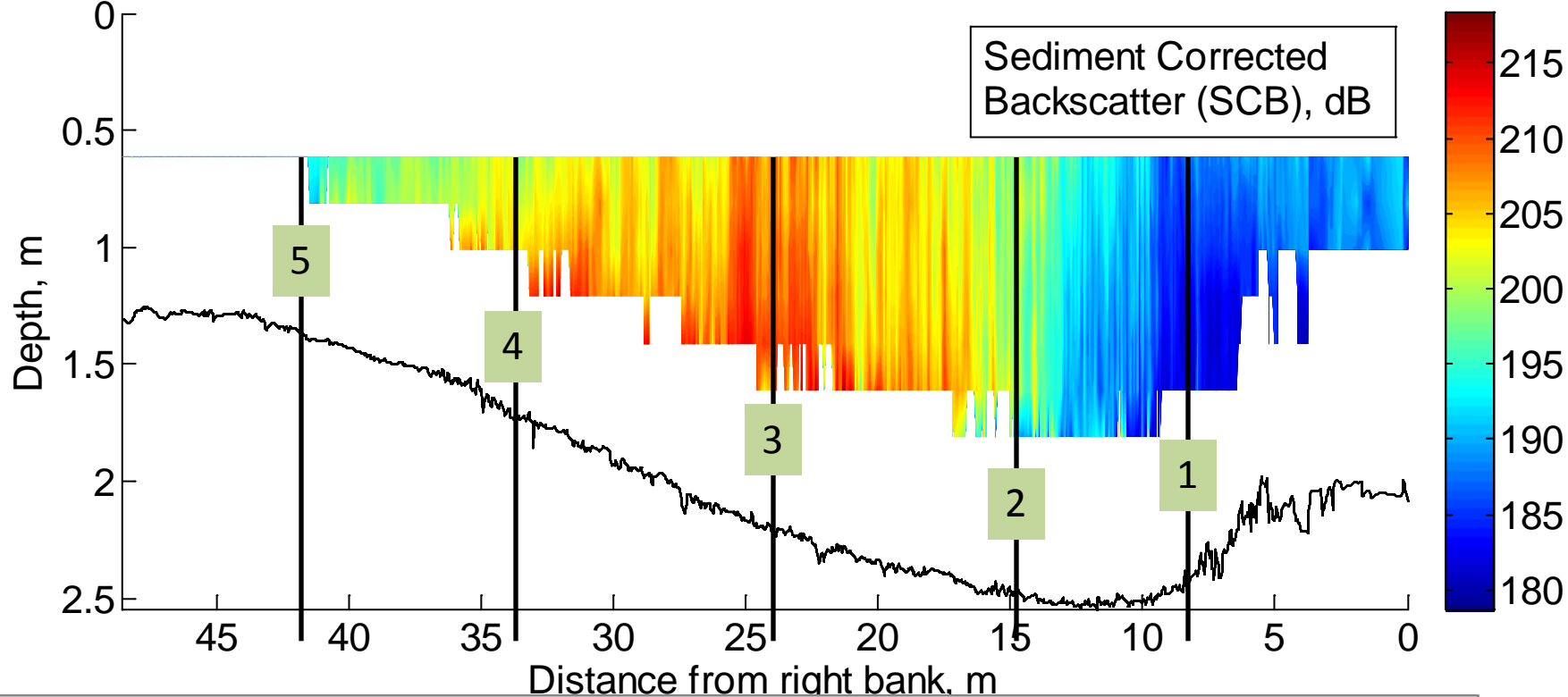
Station 1

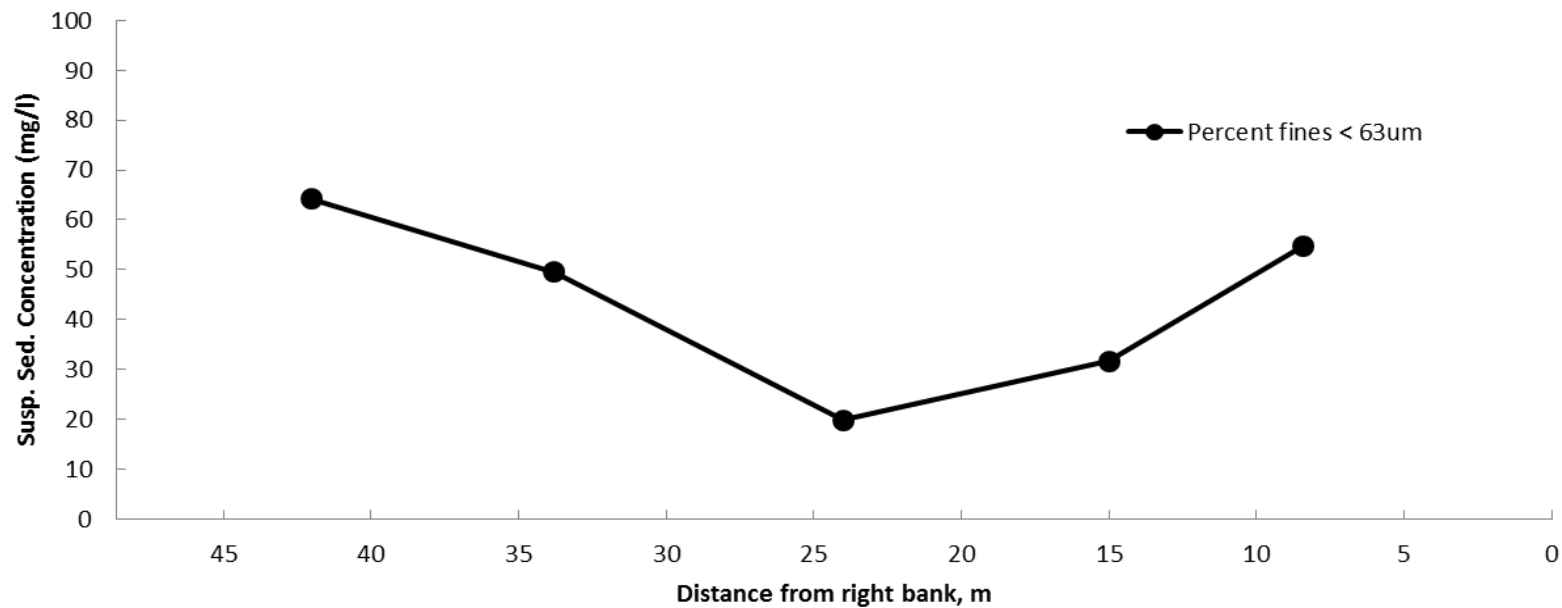
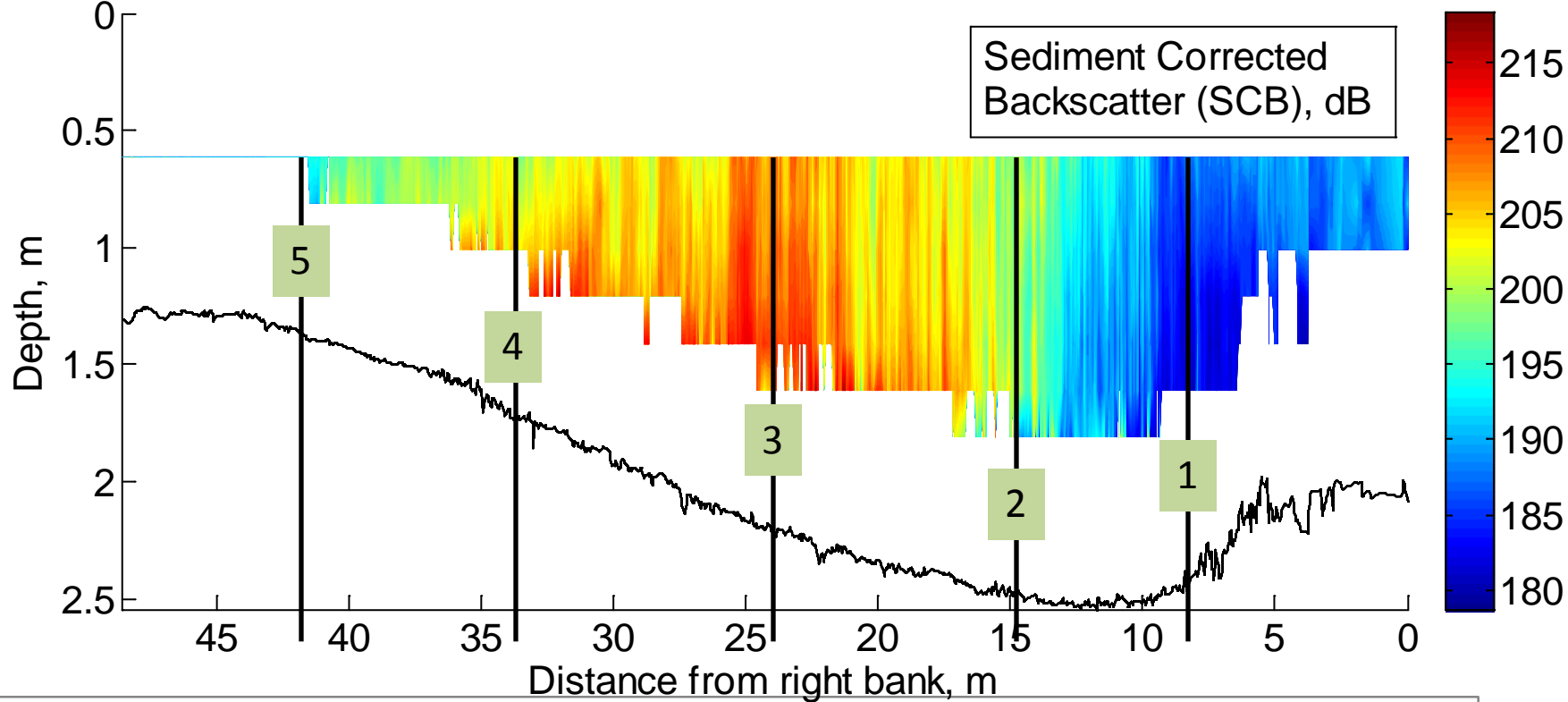


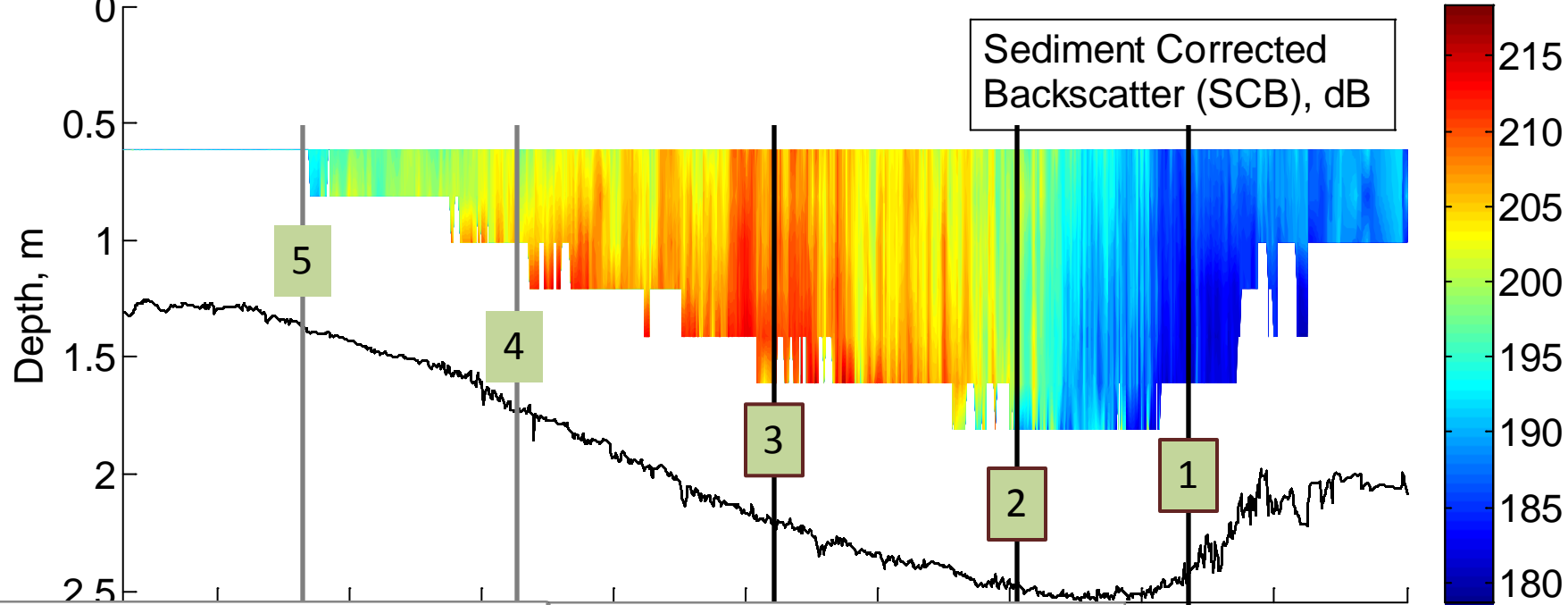
Station 3 at 0.6 depth



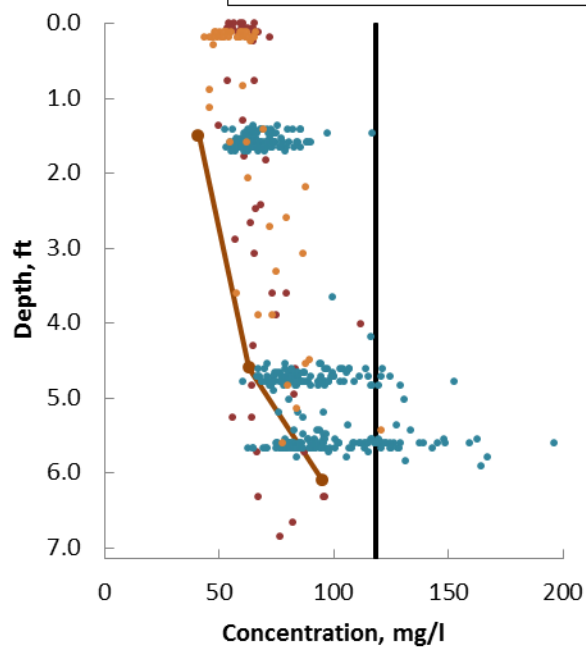




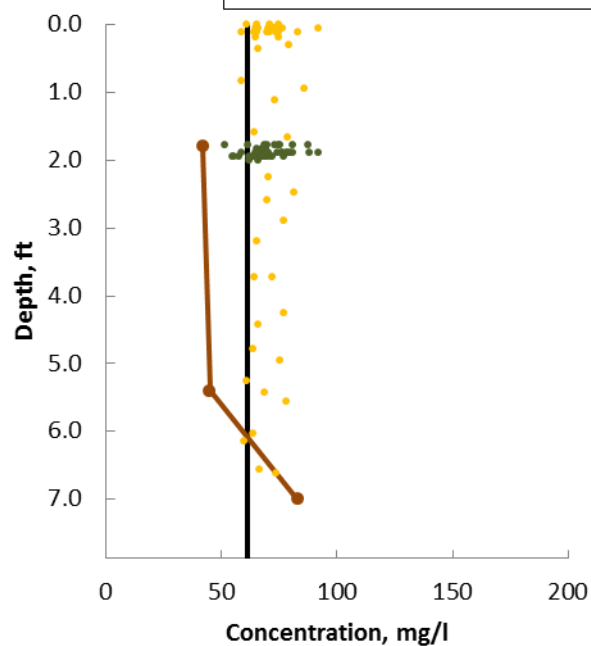




**Station 3**



**Station 2**



**Station 1**

