



Figure 6. Location of surface-water stations.

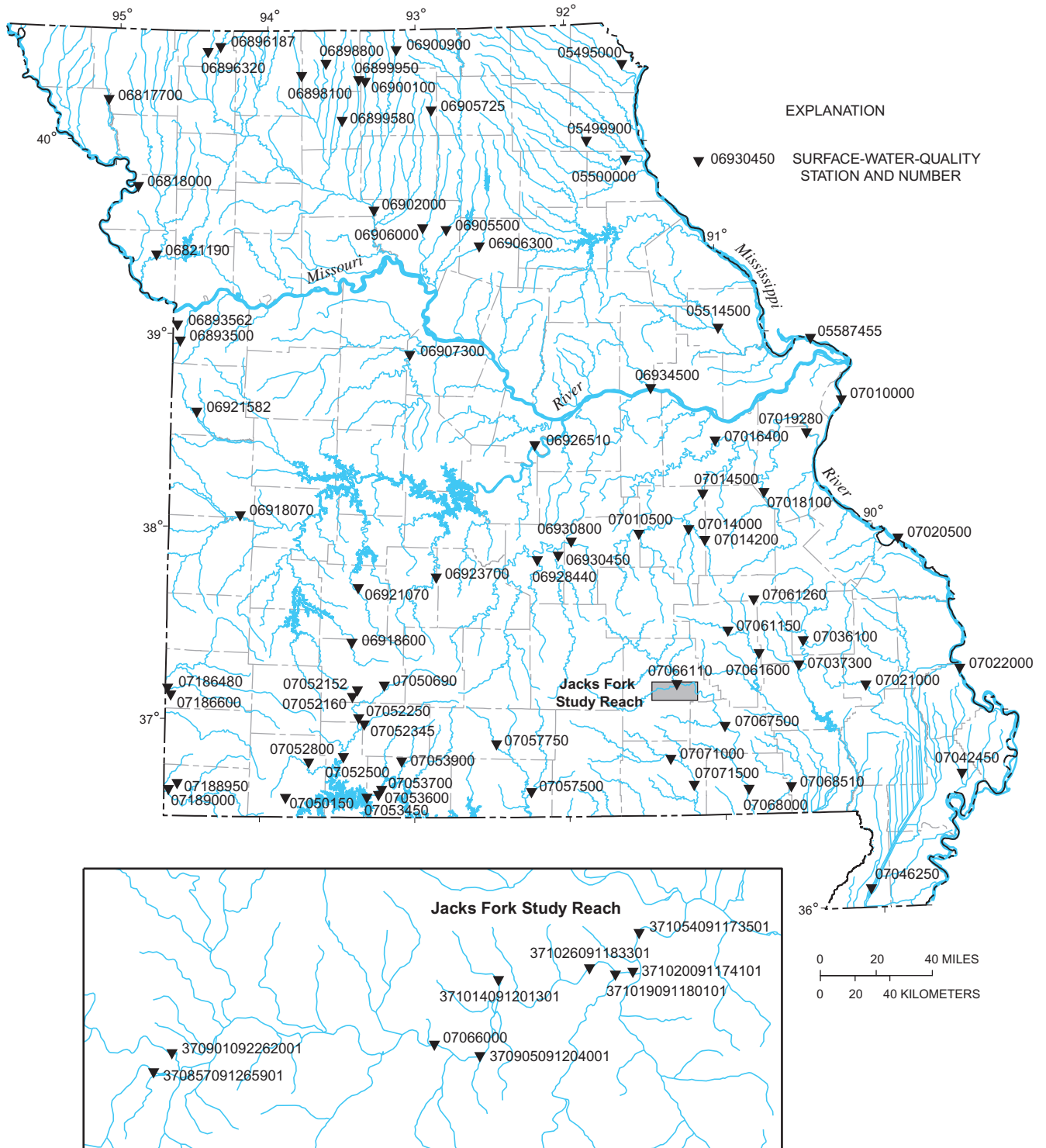


Figure 7. Location of surface-water-quality stations.

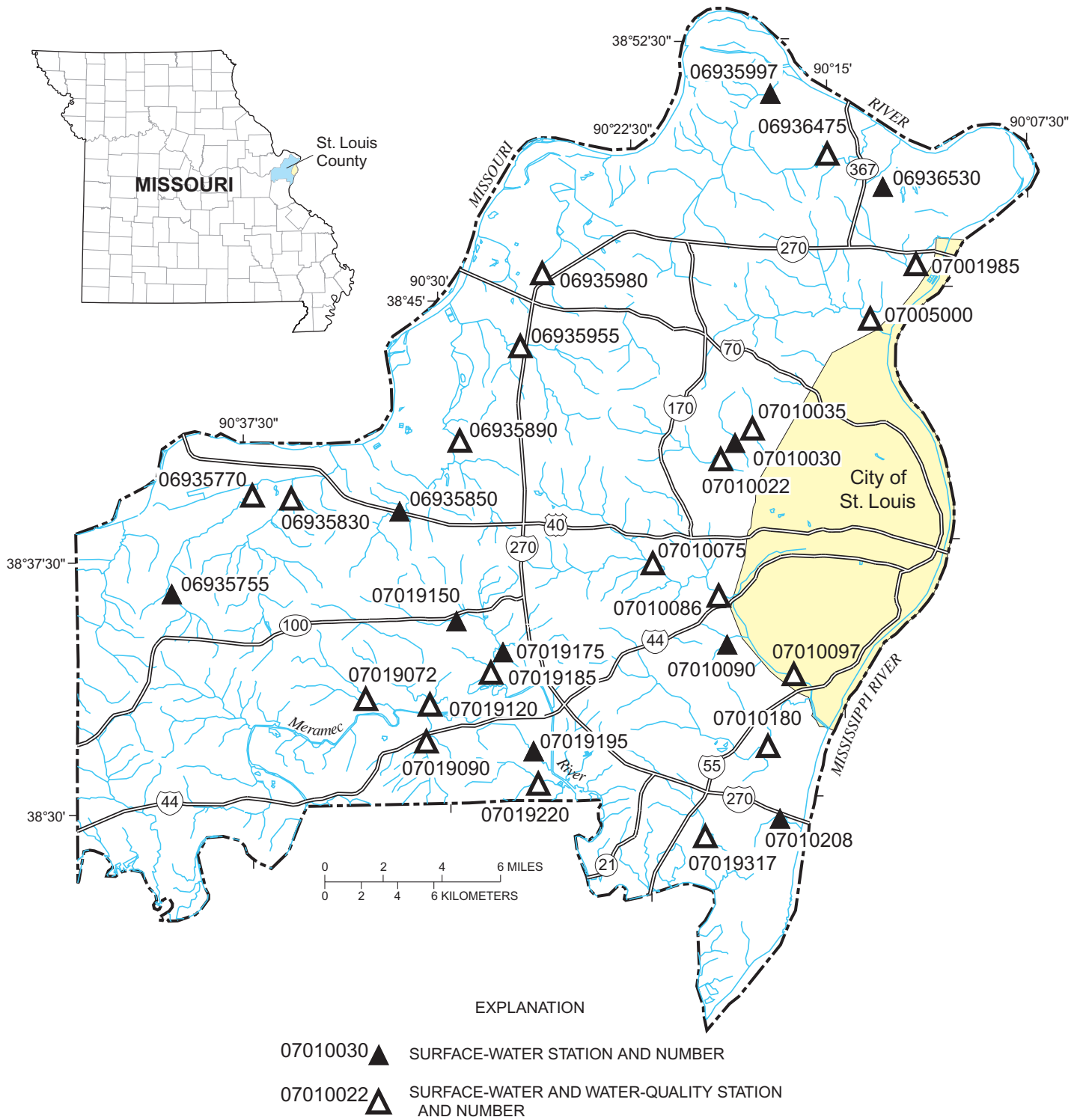


Figure 8. Location of Metropolitan St. Louis Sewer District stations.

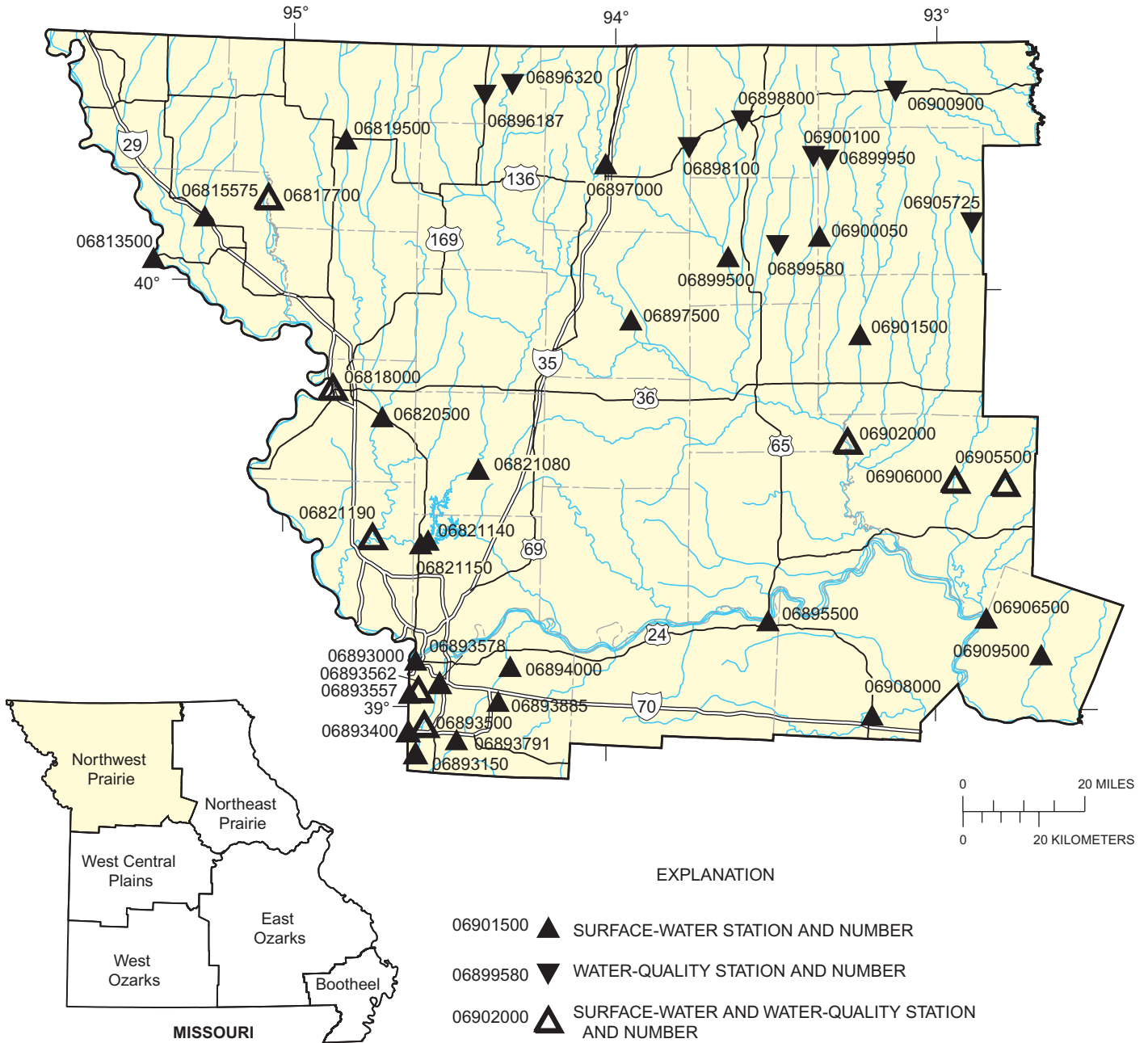


Figure 9. Location of stations in the Northwest Prairie.

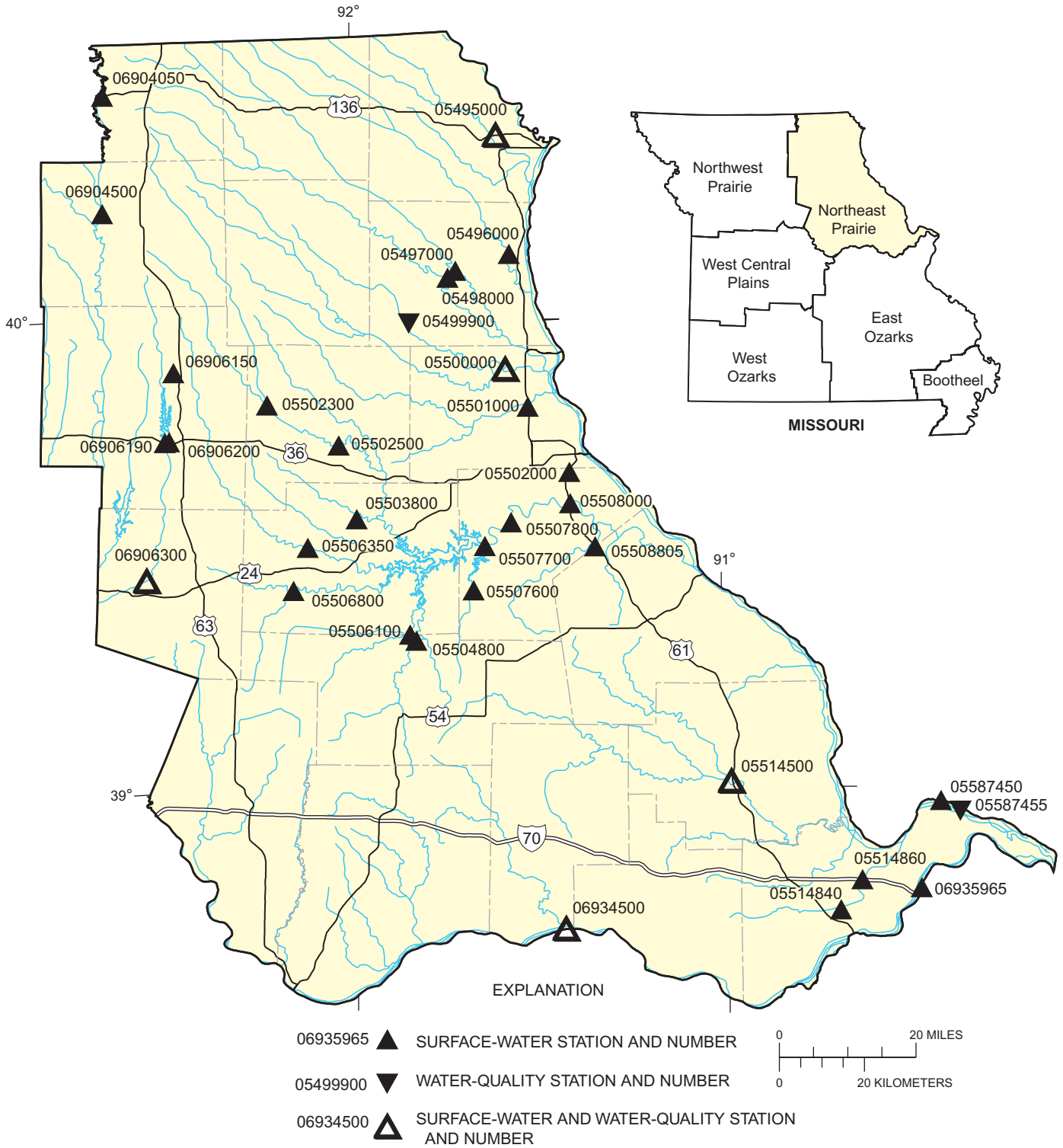


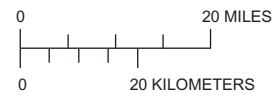
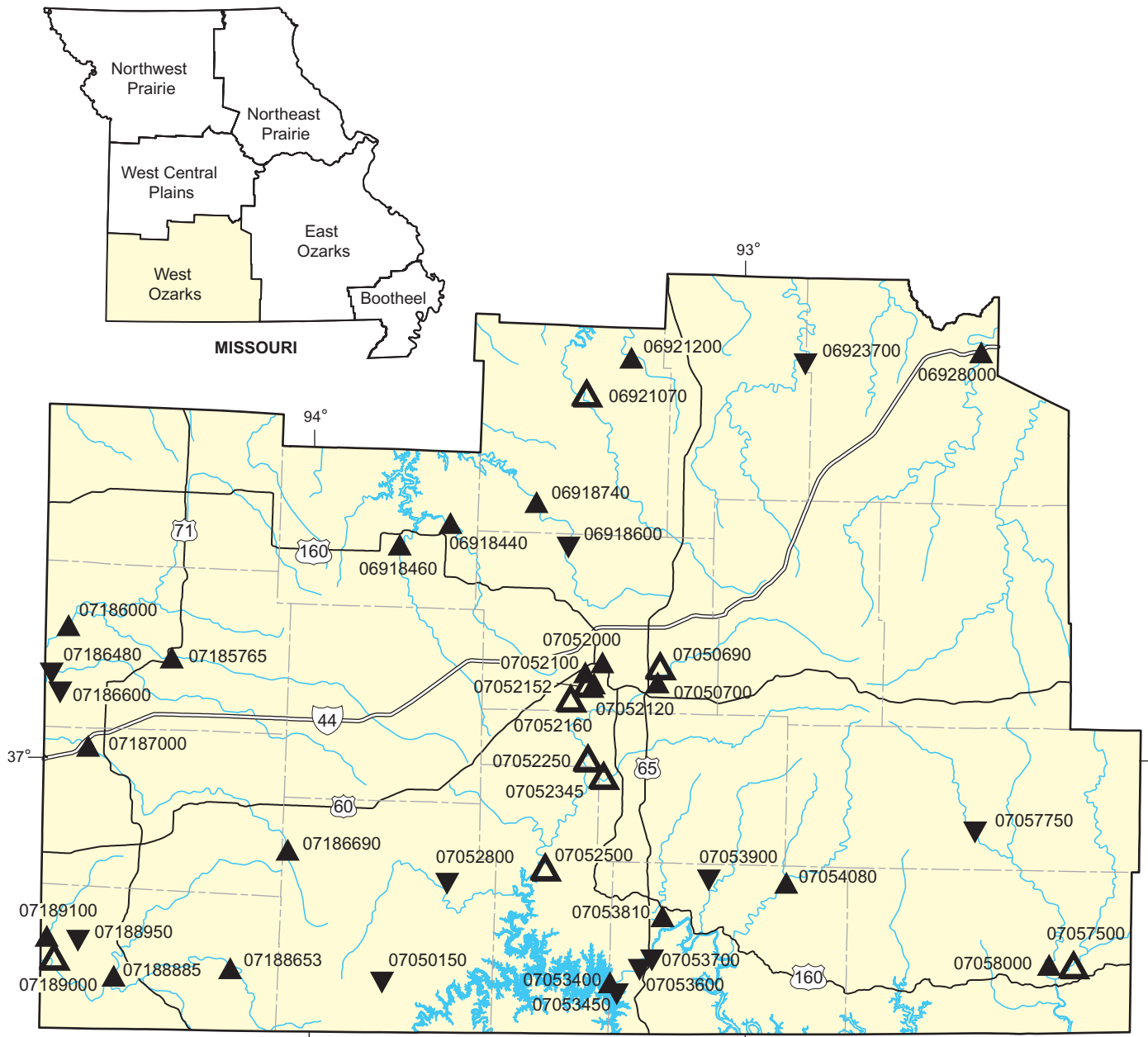
Figure 10. Location of stations in the Northeast Prairie.



EXPLANATION

- 06921760 ▲ SURFACE-WATER STATION AND NUMBER
- 06921582 ▼ WATER-QUALITY STATION AND NUMBER
- 06918070 ▲△ SURFACE-WATER AND WATER-QUALITY STATION AND NUMBER

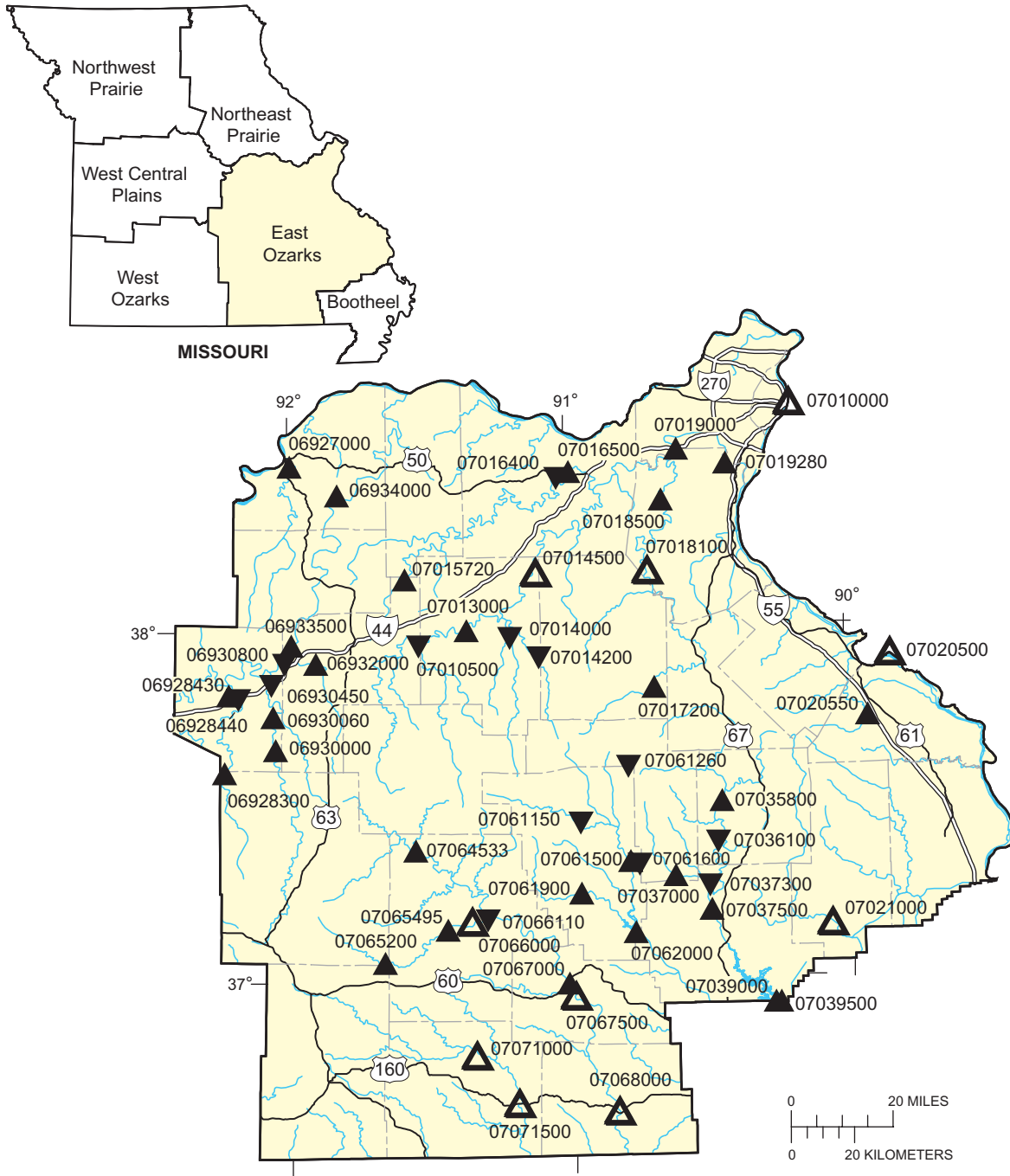
Figure 11. Location of stations in the West Central Plains.



EXPLANATION

- 07186690 ▲ SURFACE-WATER STATION AND NUMBER
- 07052800 ▼ WATER-QUALITY STATION AND NUMBER
- 07052500 ▲△ SURFACE-WATER AND WATER-QUALITY STATION AND NUMBER

Figure 12. Location of stations in the West Ozarks.

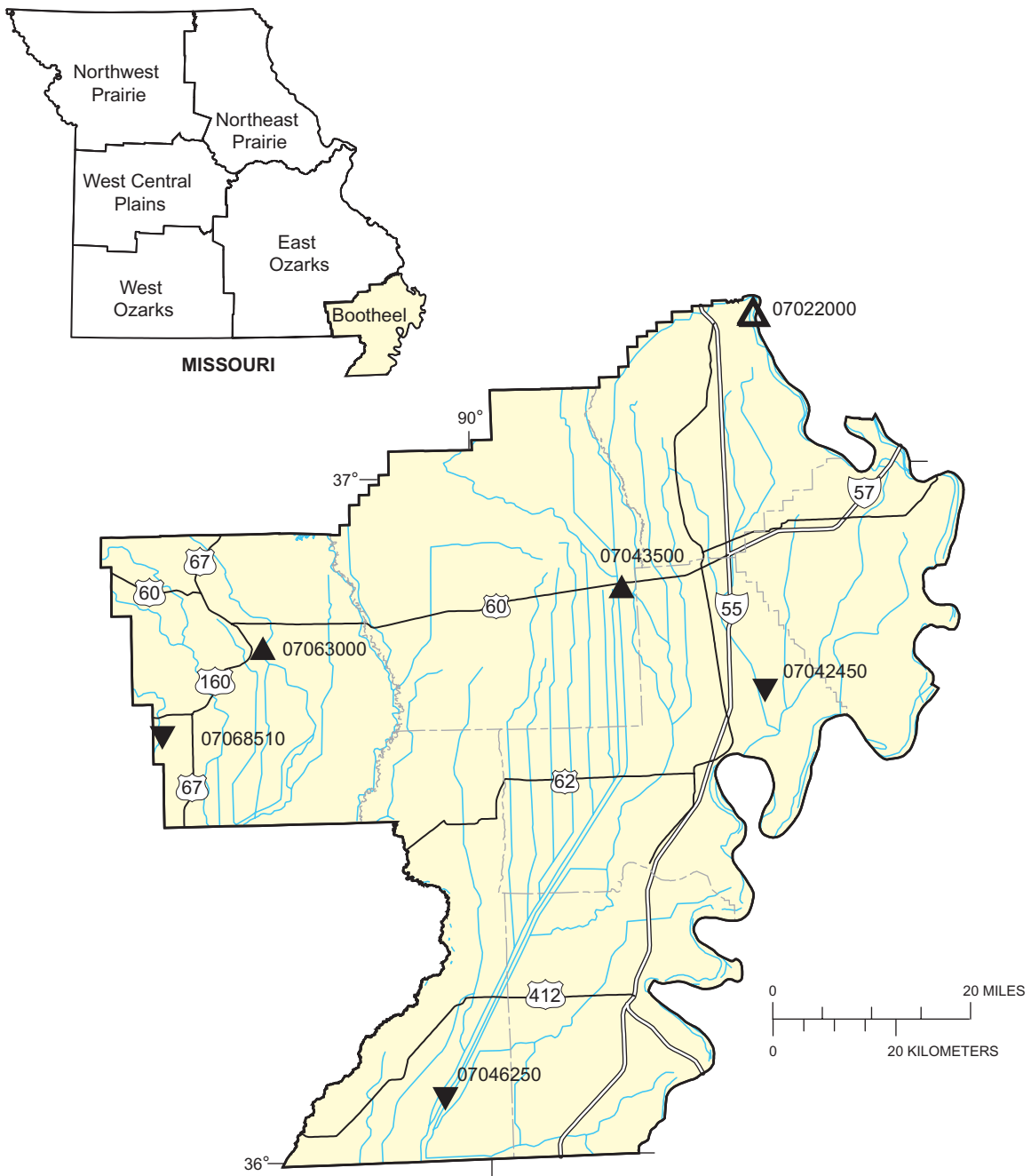


EXPLANATION

- 07065200 ▲ SURFACE-WATER STATION AND NUMBER
- 07066110 ▼ WATER-QUALITY STATION AND NUMBER
- 07067500 △ SURFACE-WATER AND WATER-QUALITY STATION AND NUMBER

Figure 13. Location of stations in the East Ozarks.





EXPLANATION

- 07043500 ▲ SURFACE-WATER STATION AND NUMBER
- 07046250 ▼ WATER-QUALITY STATION AND NUMBER
- 07020500 ▲ SURFACE-WATER AND WATER-QUALITY STATION AND NUMBER

Figure 14. Location of stations in the Bootheel.